



OMOM[®] HD

Small Bowel Capsule Endoscopy System

Product Brochure



See Clearer, Faster and More

Visualizing the small intestine has long been a diagnostic challenge in gastroenterology. International guidelines from the ESGE and ACG have established capsule endoscopy as a first-line, non-invasive method for evaluating conditions like obscure gastrointestinal bleeding (OGIB), Crohn's disease, and suspected small bowel tumors, recognizing its superior diagnostic yield. [1, 2]

Despite its clinical advantages, capsule endoscopy introduces a practical limitation: the substantial time required for video interpretation, which can hinder workflow efficiency and delay reporting.

The OMOM® HD Capsule Endoscopy system is engineered to address this challenge through high-definition imaging and integrated Artificial Intelligence. The system enhances mucosal visualization, automatically prioritizes clinically relevant segments, and supports clearer, faster and more consistent diagnostic assessment.

Together, these advancements enable a smarter and more efficient approach to small bowel diagnosis.

[1] *European Society of Gastrointestinal Endoscopy (ESGE) Guideline on Small-Bowel Capsule Endoscopy, 2022.*

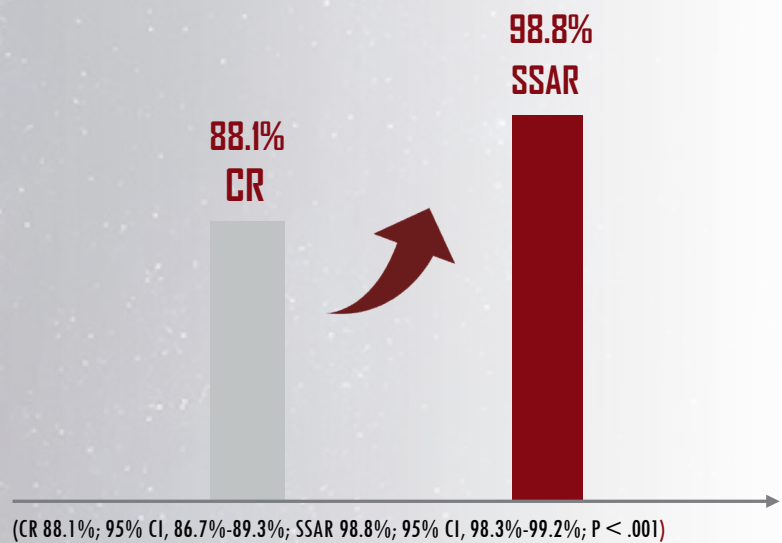
[2] *ASGE Standards of Practice Committee. The role of endoscopy in the management of suspected small-bowel bleeding. Gastrointest Endosc. 2023.*

LESS IS MORE

A total of 5,825 small bowel capsule endoscopy examinations were collected from 51 medical centers to train and to validate the *SmartScan*, which is the AI feature of *VUE Smart Software*. This clinical study was published in *JAMA Network Open* [3] and indicated *SmartScan* assisted reading (SSAR) achieved a 10.7% higher sensitivity and an 89.3% less reading time than conventional reading (CR).

Less reading time, more evident details.

Sensitivity
+10.7%



Reading Time
-89.3%



[3] Xia Xie, et al. *JAMA Network Open*. 2022; 5(7): e2221992. doi:10. 1001/jamanetworkopen.2022.21992
Development and Validation of an Artificial Intelligence Model for Small Bowel Capsule Endoscopy Video Review.

Introducing SmartScan

Evolved Features

Leveraging years of development in capsule endoscopy, our *VUE Smart* software has evolved to incorporate features that directly address key clinical challenges.

Intuitive Case Management

The color-coded, card-based case management system provides an at-a-glance overview of your workflow. This clear visual system enables instant status recognition and efficient case prioritization.



AA BB	AA BB	AA BB	AA BB	AA BB
10/23/2025 JSC2025103947	10/23/2025 JSC2025103947	10/23/2025 JSC2025103947	10/23/2025 JSC2025103947	10/23/2025 JSC2025103947
Assign Device	Recording	Download	Review	Report

Flexible Check-in

With the auto-pairing function, patient check-ins can be completed either before or after the procedure. This flexibility enables examinations to begin without a computer connection, supporting convenient and efficient remote workflows.

High-Speed Data Processing

VUE Smart completes data download and analysis in just 10 minutes—up to five times faster than comparable systems. This significant boost in processing speed streamlines your diagnostic workflow, enabling higher patient throughput and faster delivery of results.

Capsule Location

VUE Smart now automatically identifies anatomical landmarks and displays the capsule's position throughout the gastrointestinal tract during image review. This intelligent feature provides crucial context and enhances the interpretation of findings.

Bowel Preparation Assessment

The Bowel Cleansing Quality Score has been integrated into the software to enhance diagnostic confidence. VUE Smart automatically generates an objective score after case processing, while manual scoring remains available for user flexibility.

Comprehensive Data Integration

VUE Smart can seamlessly integrate into your existing clinical ecosystem, eliminating data silos and simplifying workflow connectivity. With native support for diverse data sources, it ensures full interoperability and effortless collaboration across platforms.

DICOM & PACS: Direct integration with hospital imaging networks and archives for streamlined data exchange.

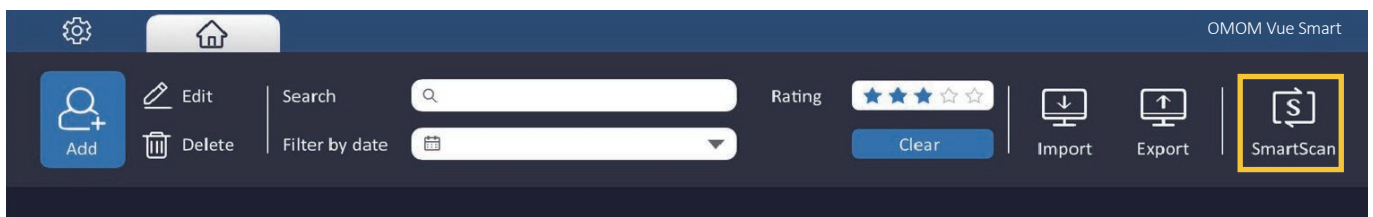
Server & Cloud: Flexible compatibility with both on-premise and cloud-based systems, enabling secure, anytime data access and storage.

AI-Powered, Smarter Ever

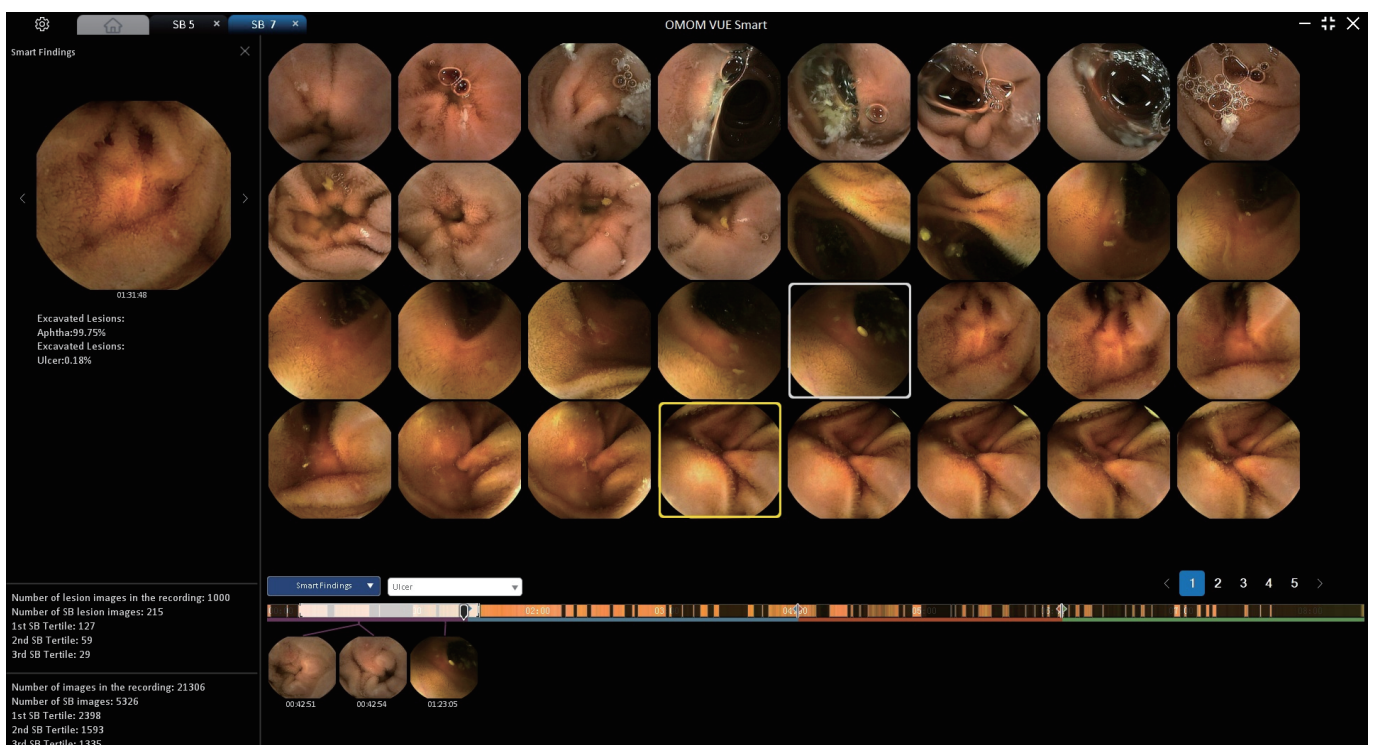
With our advanced AI algorithms, the *VUE Smart* is at the latest technological frontier in redundancy deletion, lesion detection, and classification that guaranteeing easier-than-ever interpretation as well as improved clinical outcomes.

SmartScan

Utilizing our proprietary algorithms, *SmartScan* processes the raw files by deleting up to 90% redundancy, identifying and tagging as many as 17 types of abnormalities. After Smartscanning, the *SmartView* and *SmartFinding* are ready for use.



SmartView reading mode will only play the images selected by *Smartscan*, assisting users in quickly navigating through the full video. Highlighted marks above the time bar show the images which can be displayed as a short video. By capturing the most prominent characteristics of selected images with predictive results, *SmartFinding* helps doctors by displaying the abnormalities and suggesting descriptions. Images can be filtered by either digestive organ or lesion category.



Industry-leading Features

Pushing the boundary of capsule hardware, our OMOM® HD delivers superior image quality powered by our patent optical technology. With more evident details from higher resolution images, ultra-wide-angle view, SpeedSense technology and longer battery life, OMOM® HD ushers in the era of simple but confident diagnosis.



Higher resolution
Unparalleled clarity



Enhanced sampling frequency
Upgrade by SpeedSense



Ultra-wide viewing angle
Improved tissue coverage



Increased capsule working hours
Extended reach and duration



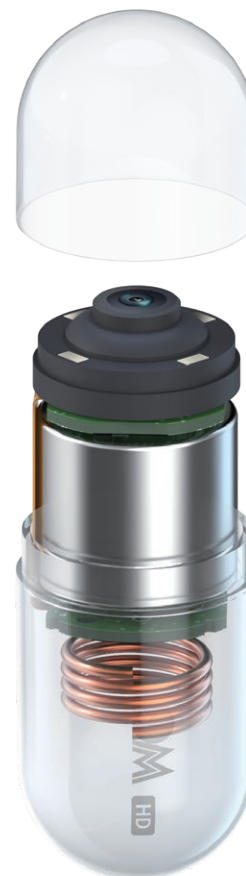
Ergonomic design
Dimension 25.4mm*11mm
Weight 3g



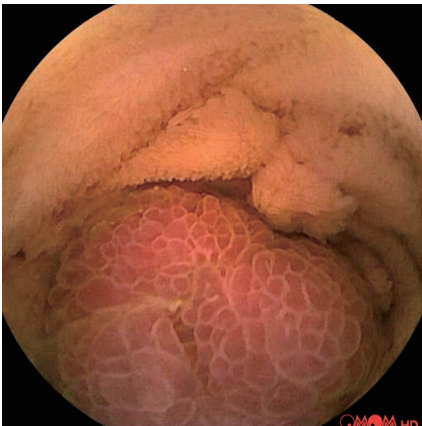
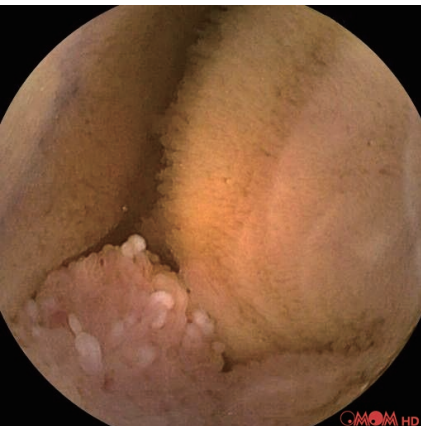
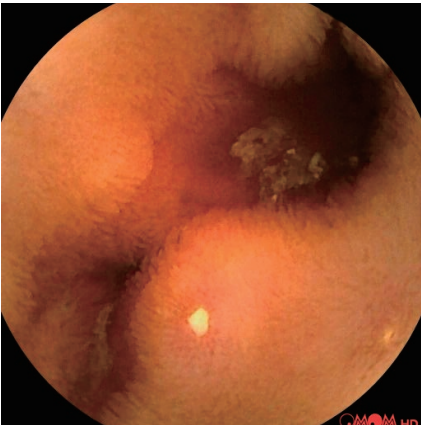
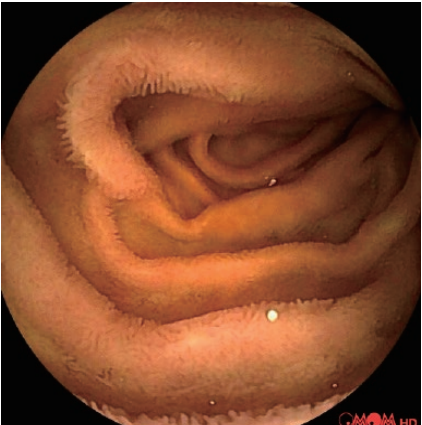
Easy charging and downloading



Disposable belt cover is now available as contact-free option.



Case Gallery





Chongqing JINSHAN Science & Technology (Group) Co., Ltd

No. 18, Nishang Road, Liangjiang New Area, 401120, Chongqing, China

T: +86-23-8609 8096 F: +86-23-8609 8777

Email: international@jinshangroup.com

www.jinshangroup.com

